

# Quick Reference Guide to ADA Interior Signage

Glyphs are to be raised 1/32" and must contrast with their background.

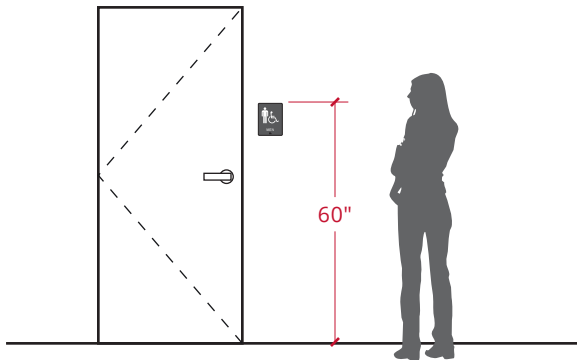
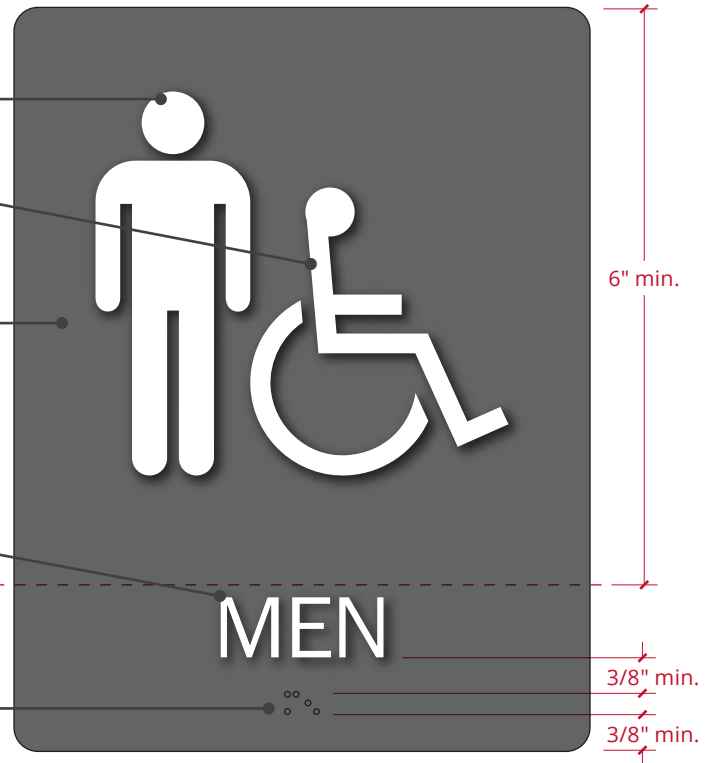
The glyph pictured here is the **only** pictogram which may be used to represent Accessibility in compliance with ADA guidelines.

The field in which a pictogram lies is to be a minimum of 6 inches in height and uninterrupted by any other characters or Braille.

Text descriptors are to be located directly beneath the pictogram field.

Characters must be raised 1/32" from their background, must be sans serif and uppercase, and must be a minimum of 5/8" in height, maximum 2", based on the uppercase "I".

Braille is to be Grade II, domed, and positioned directly below corresponding text.



Mounting signage at 60 inches from the top of the sign to finish floor will ensure compliance for any permanent sign less than one foot in height.

Requirements for mounting height state that the baseline of the lowest tactile character must be mounted a minimum of 48 inches above finish floor (AFF) or ground, while the baseline of the highest tactile character cannot exceed a maximum of 60 inches AFF or ground.

Fonts which meet the criteria set forth by 2010 ADA Standards for Accessible Design:

Acceptable fonts for raised characters are based on a number of different criteria, including, but not limited to character proportions, height, and spacing. Below are a few fonts which meet such criteria:

- AVENIR ROMAN
- ITC FRANKLIN GOTHIC BOOK
- FRUTIGER 55 ROMAN
- GILL SANS REGULAR
- HELVETICA NEUE LIGHT
- TREBUCHET MS REGULAR

For complete details regarding ADA Standards for Accessible design, visit [http://www.ada.gov/2010ADASTandards\\_index.htm](http://www.ada.gov/2010ADASTandards_index.htm). Information regarding signage can primarily be found in **Chapter 7: Communication Elements and Features**.

This information is presented as an informational summary only. We cannot assume liability for errors, omissions, or any damages resulting from the use or interpretation of this material.